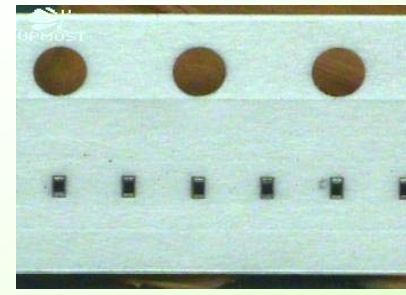
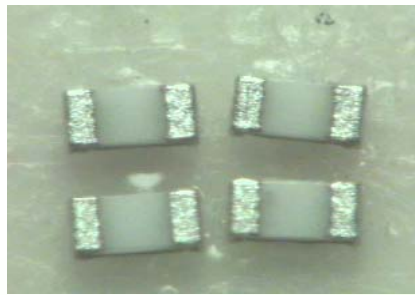
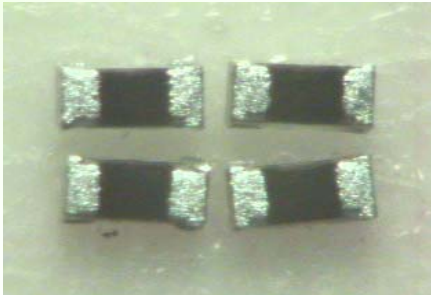


NEW!

0201

Miniaturized Resistors

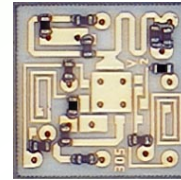


0201(0603) Components in End Products

Digital Camera/Camcoder



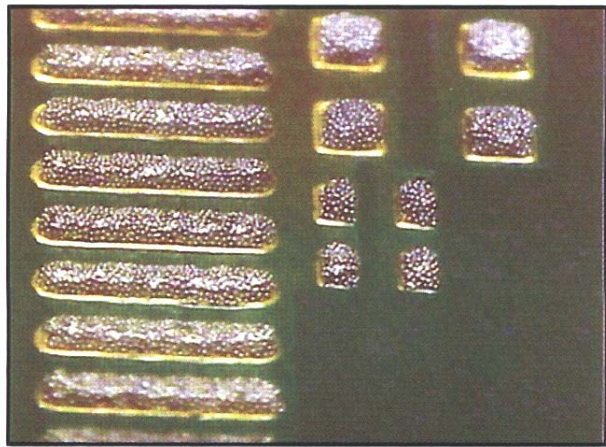
PA/VCO/TCXO module



Mobile Phone



0201 Applications : High Density Assembly

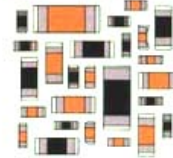


QFP, 0402 and 0201 pads

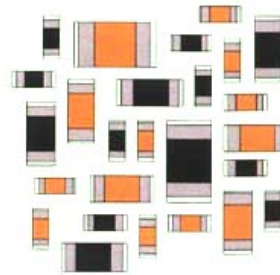
Photo from Siemens

Extremely adjacent 0201[™] mounting has made a 50 % reduction in the area size of cellular phone boards possible.

Gap 0.15 mm



Gap 0.30 mm



Sample board from Create

Panasonic **CREATE**
PORTFOLIO OF HIGH PERFORMANCE

Portable Cellular Phone

Who can mount?
Requires
-Process know-how
-Best material
-States of art equipment

After KME know-how Lond Gap 0.15mm

49 × 23

Before KME know-how Lond Gap 0.30mm

70 × 36

Over resist 2000 Y.Y

[Actual size]

The image shows two circuit boards for a portable cellular phone. The top board is labeled 'After KME know-how Lond Gap 0.15mm' and has dimensions of 49 x 23. The bottom board is labeled 'Before KME know-how Lond Gap 0.30mm' and has dimensions of 70 x 36. A white arrow points from the top board to the bottom board, indicating a reduction in size. The boards are green with various components and traces. The text 'Over resist' is visible at the bottom left of the bottom board.

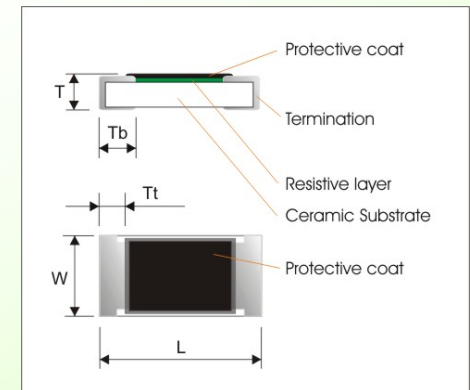
0201 components offer significant reductions in circuit dimensions compared with 0402 (up to 67%) and are perfectly compatible with the latest 0.3~0.5mm fine-pitch technology currently used for integrated circuted :

- Reduction of occupied area by 67 %
- Reduction of amount of solder paste 20%
- Reduced track dimensions

WTC 0201(0603) Chip-R Product Features

- ❑ Dimension 0.60x0.30x0.30 mm, the smallest chip-R.
- ❑ High rated power 1/20Watt@70°C.
- ❑ Wide resistance range from 10ohm up to 1,000,000ohm with $\pm 5\%$ tolerance.
- ❑ Very low impedance in Giga Hz frequency.
- ❑ Reliable and low pick & place failure rate in surface mounted assembly line

Item	WR02
Resistance range	10ohm~1,000,000ohm
Tolerance	$\pm 5\%, \pm 1\%$
TCR	$\leq \pm 350\text{ppm}/^\circ\text{C}$
Rated Power @Tamb=70°C	1/20 watt
Operating temperature range	-55°C ~ +125°C
Max. permissible/overload voltage	25V/50V
Basic specification	IEC 60115-8



$$L = 0.60 \pm 0.03$$

$$W = 0.30 \pm 0.03$$

$$T = 0.20 \pm 0.03$$

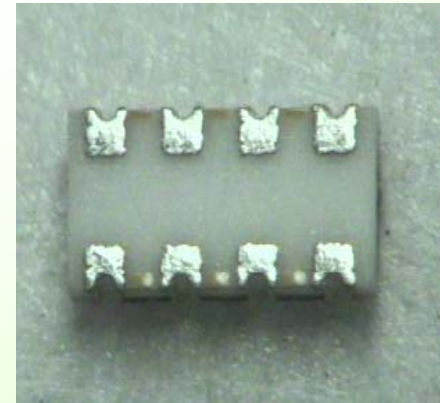
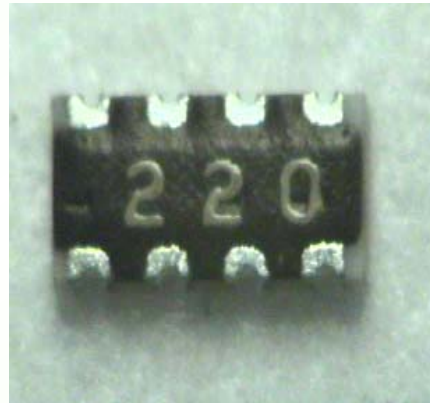
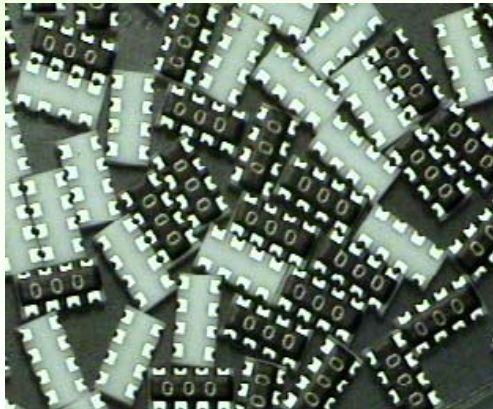
$$Tt = 0.15 \pm 0.05$$

$$Tb = 0.15 \pm 0.05$$



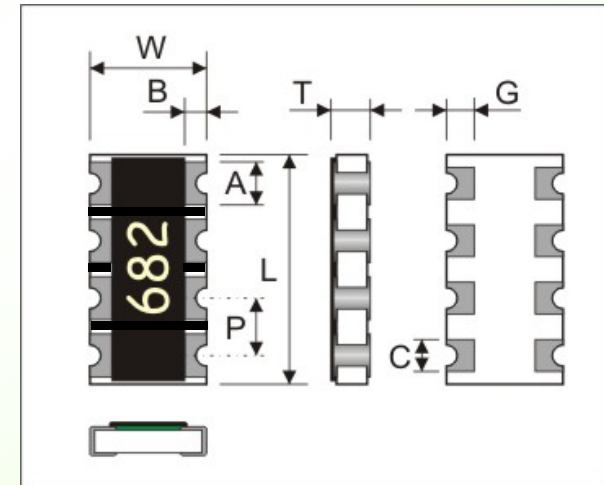
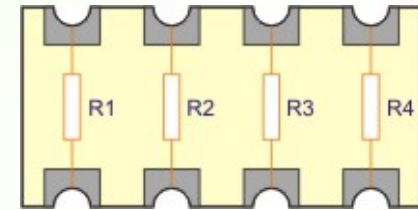
NEW!

0402x4 Chip-R Array (Concave type)



WTC 0402x4 R-Array Product Features

- ❑ Dimension 2.00x1.00x0.35 mm³, pitch 0.5mm
- ❑ High rated power 1/16Watt@70°C.
- ❑ Wide resistance range from 10ohm up to 1,000,000ohm with $\pm 5\%$ tolerance.
- ❑ Low impedance in Giga Hz frequency.



Item	WA04T
Resistance range	10ohm~1,000,000ohm
Tolerance	$\pm 5\%$
TCR	$\leq \pm 300\text{ppm}/^\circ\text{C}$
Construction	0402x4, conex termination
Rated Power @Tamb=70°C	1/16 watt
Operating temperature range	-55°C ~ +125°C
Max. permissible/overload voltage	25V/50V
Basic specification	IEC 60115-8

L	=	2.00	\pm	0.10
W	=	1.00	\pm	0.10
T	=	0.45	\pm	0.10
P	=	0.50	\pm	0.05
A	=	0.25	\pm	0.05
B	=	0.20	\pm	0.15
C	=	0.25	\pm	0.05
G	=	0.25	\pm	0.15

NEW!

Metalstrip



WW25M series Product Features

- ❑ Metal Strip resistive material stable and ultra low TCR.
Low and Stable TCR $\leq \pm 100\text{ppm}/^\circ\text{C}$ @0.002ohm.
- ❑ Operating temperature range $-55^\circ\text{C} \sim +155^\circ\text{C}$.
- ❑ Suitable for high precision current sensing circuit protection application



Item	WW25M
Size	2512(6432)
Resistance range	0.010ohm~0.001 ohm
Tolerance	$\pm 1\sim 5\%$
TCR	$\leq \pm 100\text{ppm}/^\circ\text{C}$ @0.002ohm*
Rated Power @Tamb=70°C	1 watt
Operating temperature range	$-55^\circ\text{C} \sim +155^\circ\text{C}$
Basic specification	IEC 60115-8

* Detail spec. please refer to data sheet

